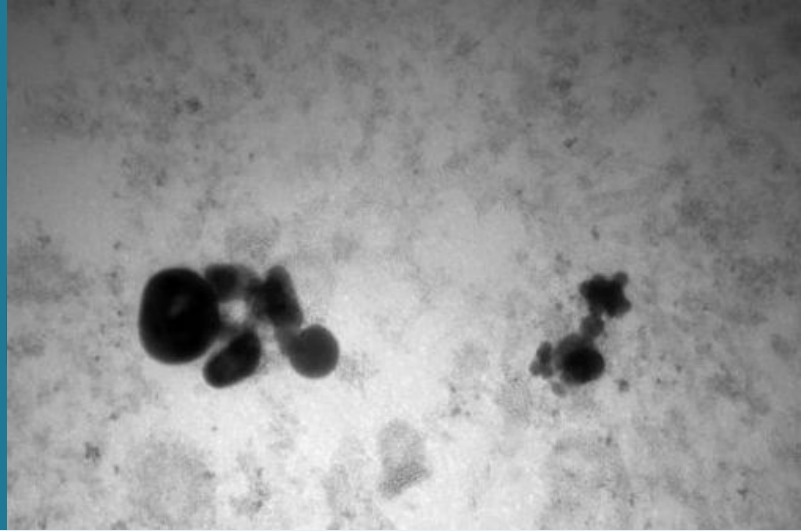


# PROJECT FACTSHEET

[www.list.lu/en/research/project/enter/?no\\_cache=1&cHash=db5a3b366f9e8b0687f21bfac9e1f321](http://www.list.lu/en/research/project/enter/?no_cache=1&cHash=db5a3b366f9e8b0687f21bfac9e1f321)

## ENTER

Investigating the behaviour of engineered nanomaterials in the urban water cycle



### Inspiration

With the increase in the production and application of engineered nanomaterials (ENMs) to daily life, more ENMs will be released into the aquatic environment, making it crucial to understand the processes determining the behaviour of ENMs in the environment. ENTER, Action ES1205 of the intergovernmental European research framework COST, aims to look at which ENMs are released and in what amounts, how persistent they are, and to what extent they cause in situ toxicity.

### Innovation

To investigate these issues, the close collaboration of experts from different disciplines is needed. These include analytical chemists, environmental scientists and civil engineers, as well as jurists, politicians and other stakeholders. ENTER will help to advance scientific knowledge on the release and fate of ENMs in the urban water cycle and to communicate expert knowledge in an appropriate manner to the non-scientific community.

### Impact

The project will break down barriers between scientific and public pressure groups through intensified scientific exchange via position papers and other communication. ENTER will also help to facilitate the decision-making process by supporting end users such as politicians, the EU and national public servants.

### Partners

German Federal Institute of Hydrology (DE)

### Financial Support

European Cooperation in Science and Technology (COST)

### Contact

5, avenue des Hauts-Fourneaux  
L-4362 Esch-sur-Alzette  
phone: +352 275 888 - 1 | [LIST.lu](http://LIST.lu)

Dr Arno GUTLEB ([arno.gutleb@list.lu](mailto:arno.gutleb@list.lu))  
Dr Tommaso SERCHI ([tommaso.serchi@list.lu](mailto:tommaso.serchi@list.lu))  
© Copyright April 2024 LIST

LUXEMBOURG  
INSTITUTE OF SCIENCE  
AND TECHNOLOGY

