



Welcome



WORKSHOP “EMPOWERING FARMERS WITH DIGITAL TECHNOLOGIES”



25th October 2022

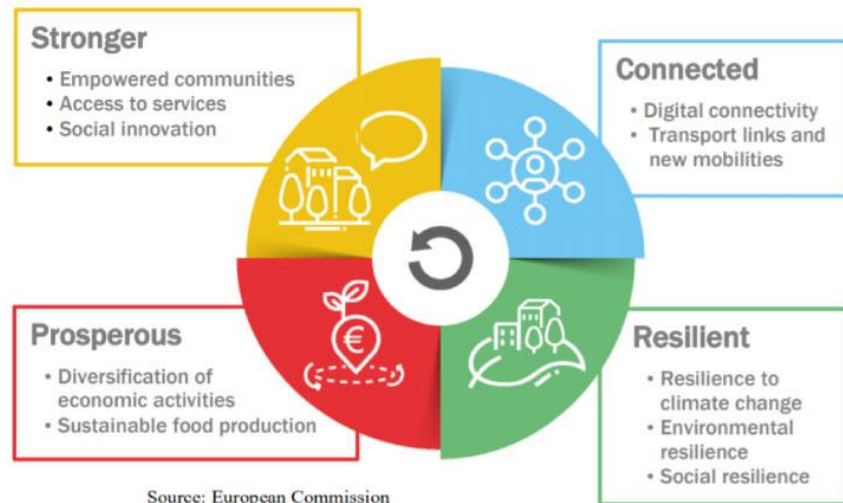
WORKSHOP

“EMPOWERING FARMERS WITH DIGITAL TECHNOLOGIES”

Maria Rita Palattella, PhD
Senior R&T Associate
Lux5GCloud Project Coordinator



A LONG-TERM VISION FOR THE EU'S RURAL AREAS TOWARDS STRONGER, CONNECTED, RESILIENT AND PROSPEROUS RURAL AREAS BY 2040



THE KEY ROLE OF DIGITALISATION IN THE FUTURE OF RURAL AREAS

Main Opportunities

- ☐ Access to markets and opportunities for new business models
- ☐ Enhance access to services
- ☐ Enhance productivity and resource efficiency
- ☐ Enable community-led innovation



THE KEY ROLE OF DIGITALISATION IN THE FUTURE OF RURAL AREAS

Main Challenges

☐ Availability of connectivity

☐ Rural and remote areas remain **largely unconnected** to the Internet

- Low population density
- Large distances
- Rough and difficult-accessible terrain
- Policies and Regulations
- Cost of deployment
- Difficulty in attracting investment
- Lack of technical knowledge

☐ Affordability of connectivity

☐ Young people leaving rural areas

☐ Limited Digital Skills and Competences

☐ Missing bottom-up community initiatives



DIGITAL INFRASTRUCTURE

The FIRST STEP TOWARD RURAL DIGITALISATION



“Digital infrastructure is an essential enabler for rural areas to contribute to and make the most of the digital transition”, EC





5G for enabling new services in rural remote areas

Glenn Van Bost, POST



HOW POST EMPOWERS RURAL COMMUNITIES WITH 5G > NOW

LX5GCLUD



The DIGIWALD Project for Digital Inclusion

What	How
▪ Interactive City Communications Totems	⇒ Interactive screens – visit the POST Booth
▪ Digital Inclusion ▪ High Speed Internet for all ▪ Cover complex and difficult zones to connect	⇒ POST Internet + POST TV over 4G-5G (Fixed Wireless Access)
▪ Enable a Rural Smart City	⇒ Connected Water Meters

HOW POST WILL EMPOWER RURAL COMMUNITIES WITH 5G > TOMORROW



E.g. The LUX5GCloud Project outcomes and much more

What	How
<ul style="list-style-type: none">■ Improve your fields productivity through real-time crop control	<ul style="list-style-type: none">⇒ 5G High reach connectivity⇒ 5G Low Energy connected Objects⇒ 5G Accurate Positioning services⇒ 5G Secured communications
<ul style="list-style-type: none">■ Secure your fields / protect your cattle from predators enabling real time intrusion detection	
<ul style="list-style-type: none">■ Manage, maintain and secure your expensive Machines	

POST EMPOWERING RURAL COMMUNITIES WITH 5G > THE DAY AFTER TOMORROW

If you can DREAM it,
You can DO it.

WALT DISNEY

POST EMPOWERING RURAL COMMUNITIES WITH 5G > THE DAY AFTER TOMORROW

If you can **DREAM** it,
You can **DO** it.

WALT DISNEY

... together with





The Lux5GCloud Approach toward digitalised Agriculture

Dr. Maria Rita Palattella, LIST



DIGITAL TECHNOLOGIES ECOSYSTEM

Many Technologies

- ☐ 5G Networks
- ☐ Artificial Intelligence
- ☐ Internet of Things
- ☐ Cloud Computing
- ☐ Earth Observation
- ☐ Block Chain



**A common objective :
Provide sustainable digital
farming solutions**

Soil Moisture Monitoring





Internet of Things and LoRaWAN connectivity

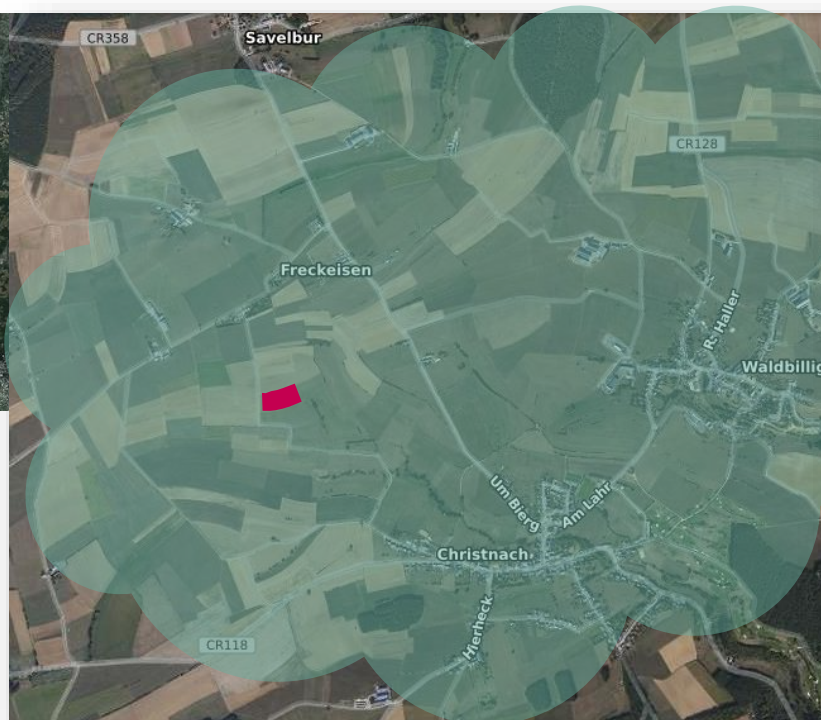
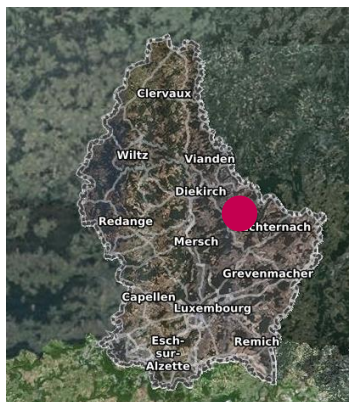
Dr. Maria Rita Palattella, LIST



LUX5GCLLOUD FIELD — STUDY AREA

Waldbillig, Luxembourg

LUX5GCLLOUD



Waldbillig

5G Coverage
DIGIWALD Project

Crop

LUX5GCLLOUD NETWORK ARCHITECTURE

Soil Moisture Sensors and IoT LoRaWAN Network

LUX5GCLLOUD











LUX5G CLOUD NETWORK ARCHITECTURE

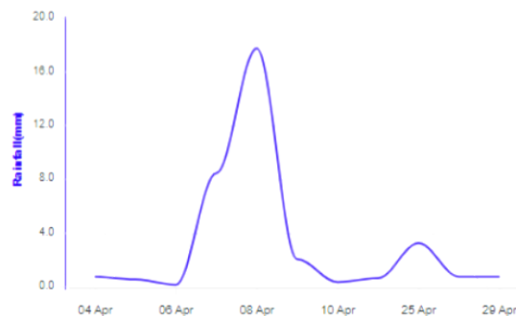
Weather Station and Multiple Technologies

Real-Time Data

Weather Station Data

	Air Temperature	11m ago	14.4 °C
	Air Humidity	11m ago	92.2 %
	Box Atm. press.	11m ago	966.0 hPa
	Wind Speed	11m ago	1.5 mps
	Wind Direction	11m ago	190.6 °
	Illuminance	11m ago	6,825.0 lux
	UV index	11m ago	0.1
	Rainfall	3h ago	0.1 mm

Rainfall



LoRaWAN®

WiFi™



2G 3G 4G



LUX5GCLLOUD NETWORK ARCHITECTURE

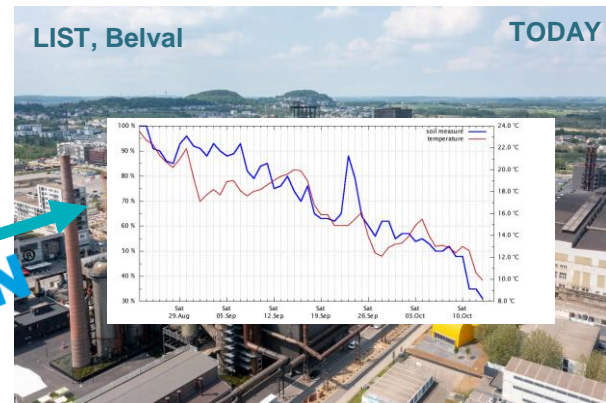
From your field to your farm

One network Infrastructure for MANY users

LUX5GCLLOUD



Provide coverage to different fields in the range of [5 – 20] Km.



GOMSPACE

InTech

Frontier Connect

LUXEMBOURG
INSTITUTE OF SCIENCE
AND TECHNOLOGY

LIST



5G IoT camera: Next level of computer vision decisions

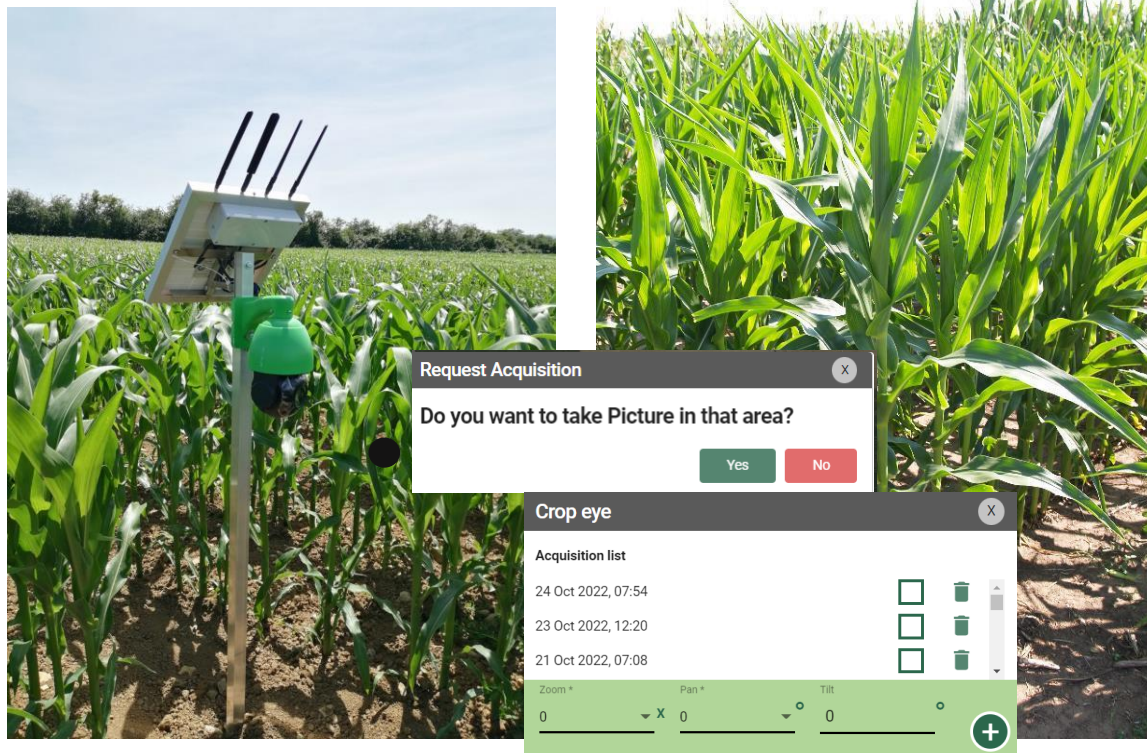
Catalin Chitu, Frontier Connect



5G CAMERA

Lumbara Crop Eye

LX5GCLUD



- ☐ 5G Connectivity
- ☐ Remote control via app
- ☐ 360 degrees crop scanning
- ☐ Zoom / Pan / Tilt
- ☐ High-resolution images

5G CAMERA

Edge Computing, and 5G Connectivity to the Cloud

LX5GCLUD



CHDP



- ❑ High-resolution images captured with an advanced IoT 5G device
- ❑ Camera performing 360 degrees crop scanning, with **intelligent controlling zoom**
- ❑ Images transmitted over 5G to the Cloud Platform CHDP in almost real-time. Made available for the farmer, and any authorized user

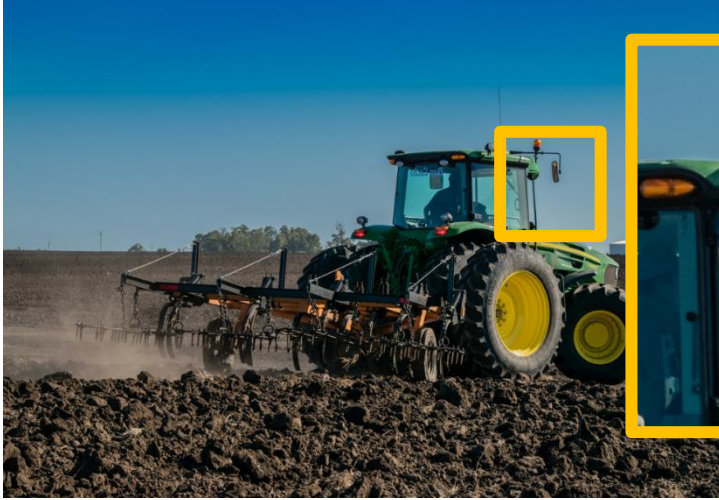
TODAY: FIXED IN THE FIELD...



5G CAMERA

TOMORROW: MOBILE ON A TRACTOR

5G revolutionises agricultural machinery



- ☐ Remote control of automated machinery fleets
- ☐ Optimize individual plant treatments
- ☐ Detect animals, avoid accidents, protect the yield



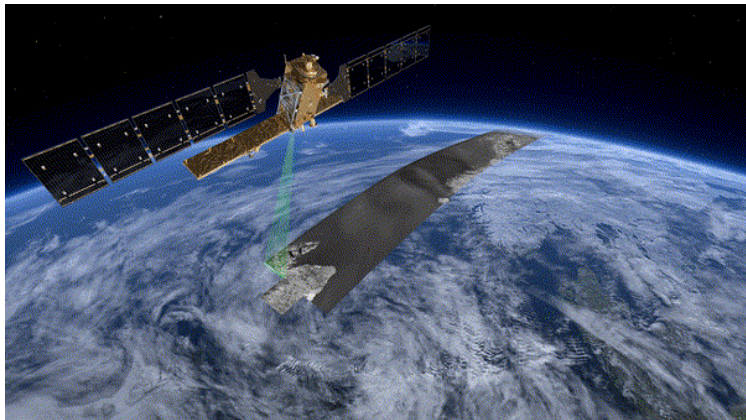


Satellite Data and Machine Learning

Yu Li, LIST

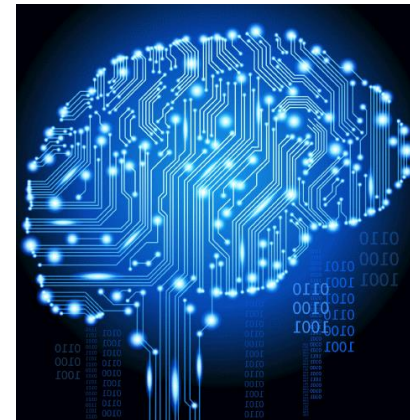


EARTH OBSERVATION (EO) AND ARTIFICIAL INTELLIGENCE (AI)



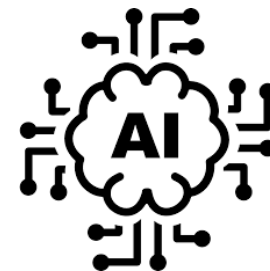
Artificial Intelligence

- ❑ Enabling machine with human-like capabilities (learning, reasoning, planning and creativity)
- ❑ Enabling to **uncover the complicated non-linear relationship between EO and physical parameters** of interest.



Earth Observation

- ❑ Information about planet Earth's physical, chemical and biological systems.
- ❑ Monitor and assess the status of, and changes in natural environment.
- ❑ Improving understanding of Earth system processes
- ❑ Supporting operational applications.



Sentinel-based soil moisture estimation with Machine Learning



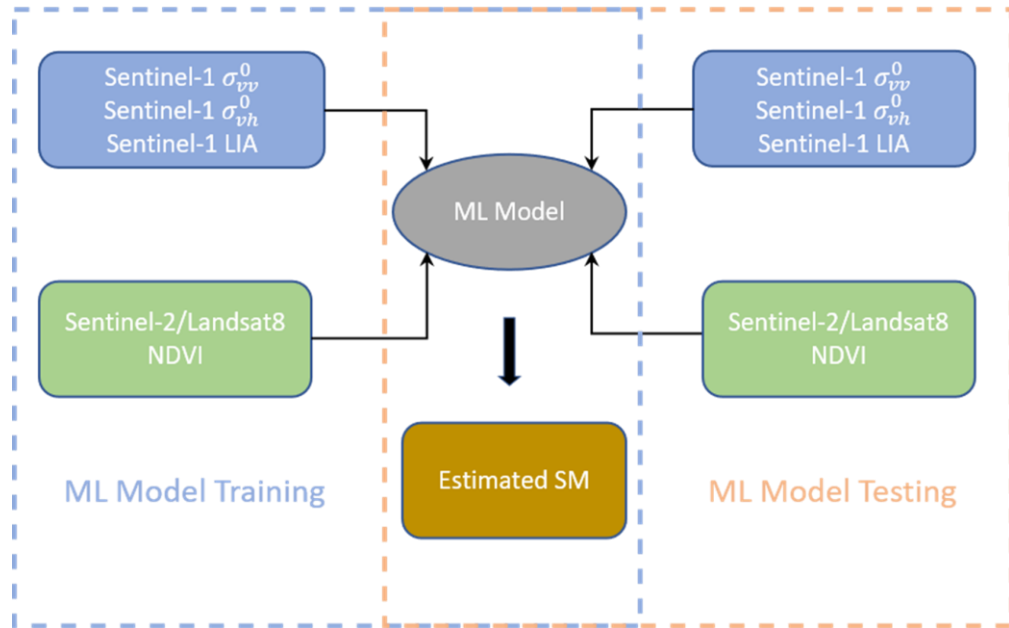
Input to ML Model:

- Sentinel-1 backscattering coefficient
- Sentinel-1 local incidence angle
- NDVI Normalized Difference Vegetation Index



Output of ML Model:

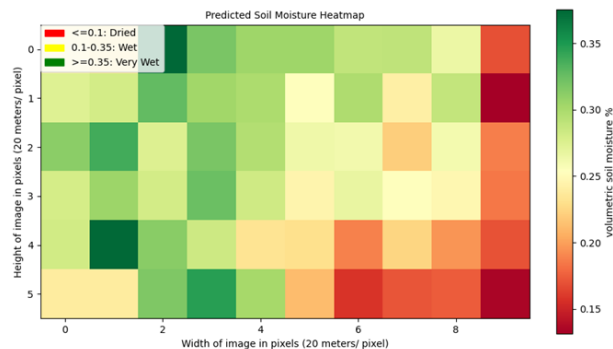
- Soil Moisture Content (SMC)



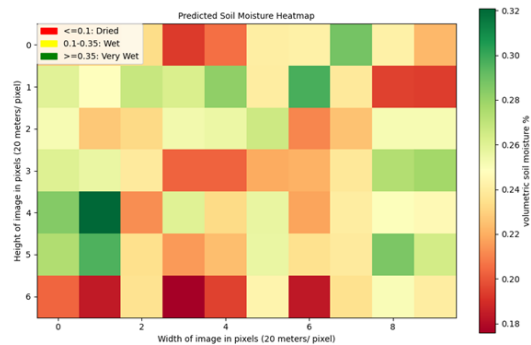
Drought Monitoring and Early Warnings

LUX5GCLLOUD APPLICATION

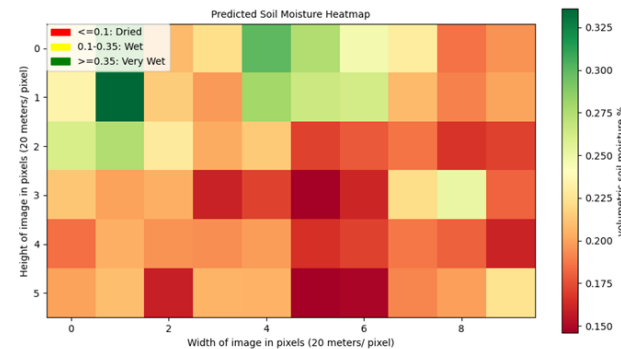
Soil Moisture Mapping



12.04.2022



17.04.2022



24.04.2022

The estimated soil moisture contents are displayed in a Soil Moisture heat map, allowing farmers to easily identify the specific areas of their field which are more affected by water stress.

Secure Cloud Platform:

Bridge the gaps between Data security, accessibility, and monetization

Philippe Eymann, InTech.

Florent Cochet, CoDare



CHDP: WHAT FOR?



- CHDP = Cloud Hierarchy Data Platform
- Bridge the gaps between Data security, accessibility and monetization

DIGITAL AGRICULTURE CURRENT STATE

LX5GCLUD



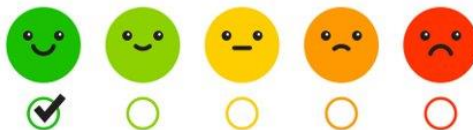
REMOTE SENSING



INTELLIGENCE / DATA ANALYTICS



WATER STRESS?



LUXEMBOURG
INSTITUTE OF SCIENCE
AND TECHNOLOGY



IOT DEVICES



DIGITAL AGRICULTURE FUTURE STATE

LX5GCLCLOUD



CLOUD HIERARCHY DATA PLATFORM



PROVIDER

Remote Sensing
IoT sensors
5G Camera
Machine
Learning



CONSUMER

Farmers
Universities
Government
Administration
Insurance



LUXEMBOURG
INSTITUTE
OF SCIENCE
AND TECHNOLOGY



THE GOVERNMENT
OF THE GRAND DUCHY OF LUXEMBOURG
Ministry of Agriculture, Viticulture
and Rural Development



LUXEMBOURG
INSTITUTE
OF SCIENCE
AND TECHNOLOGY



CHDP CORE FEATURES

1



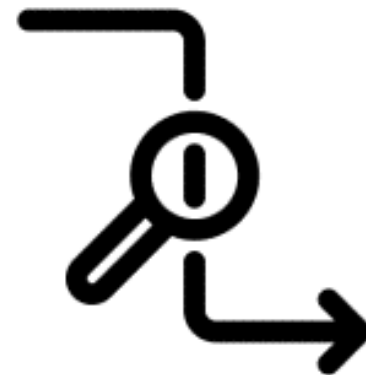
SECURE

2



STORE

3

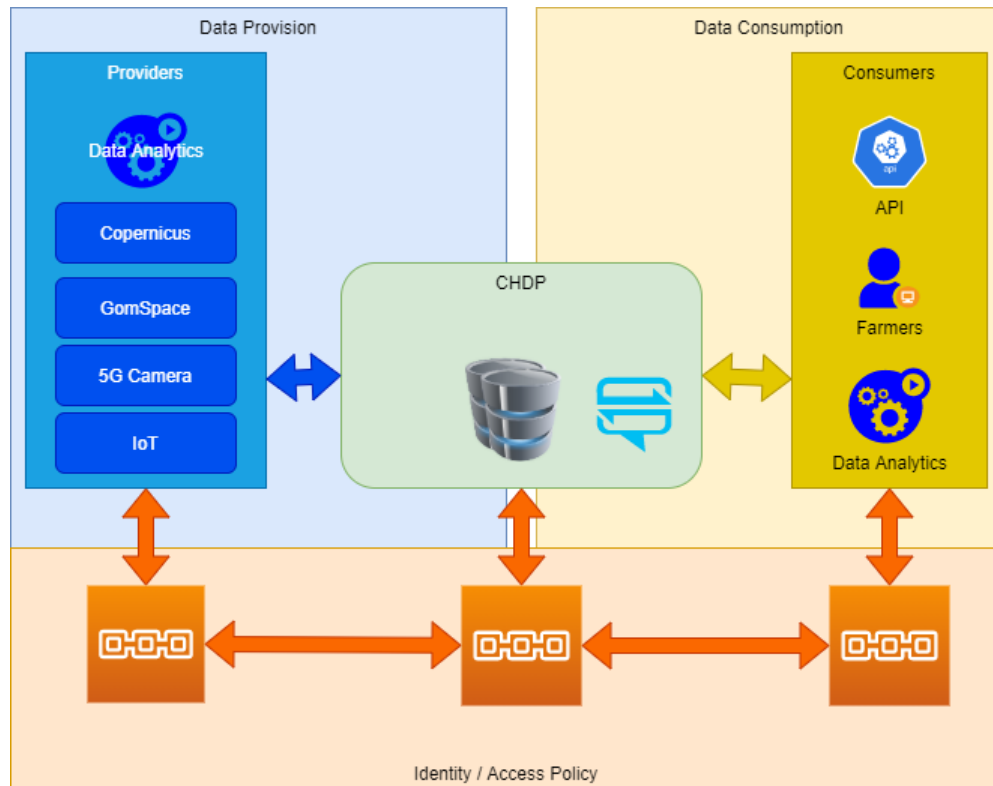


DISTRIBUTE / MONETIZE Data
Trigger customised data capture

BLOCKCHAIN AS A TRUST ENABLER

Why use Blockchain in CHDP ?

- ❑ **Security:** information is encrypted and cannot be altered, it is distributed among parties
- ❑ **Privacy:** information is available only for authorized users, through well defined access rules
- ❑ **Decentralized Governance:** rules are defined in smartcontracts which can be audited



A single Integrated Approach for many digital solutions

Dr. Maria Rita Palattella, LIST



DIGITAL FARMING SOLUTIONS

Lux5GCloud Soil Moisture Monitoring Application



DIGITAL FARMING SOLUTIONS

Fungal Disease Detection

LX5GCLCLOUD



← → ↻ 🏠 chdp.lumbara.com/pages/posts

Farms +

Septoria disease alert 60% STARTED

Apr 12 14:50 **Wheat Alhambra, Waldbillig**

ALERTS

Clay soils - yes Temperature - Low BBCH 10-20- Partially uprooted. Wheat monoculture - NO Improper fertilization - NA Irrigation - NA Abundant rain - 20 Soil moisture - 40% Persistent fog/light - yes

Too much water in soil UPDATED

Apr 10 10:59 **Wheat Alhambra, Waldbillig**

ALERTS

Wheat (on Waldbillig) BBCH 21 NEW

Apr 08 12:48 **Wheat Alhambra, Waldbillig**

POSTS

Wheat (on Waldbillig) germination started NEW

Mar 10 11:48 **Wheat Alhambra, Waldbillig**

NOTES

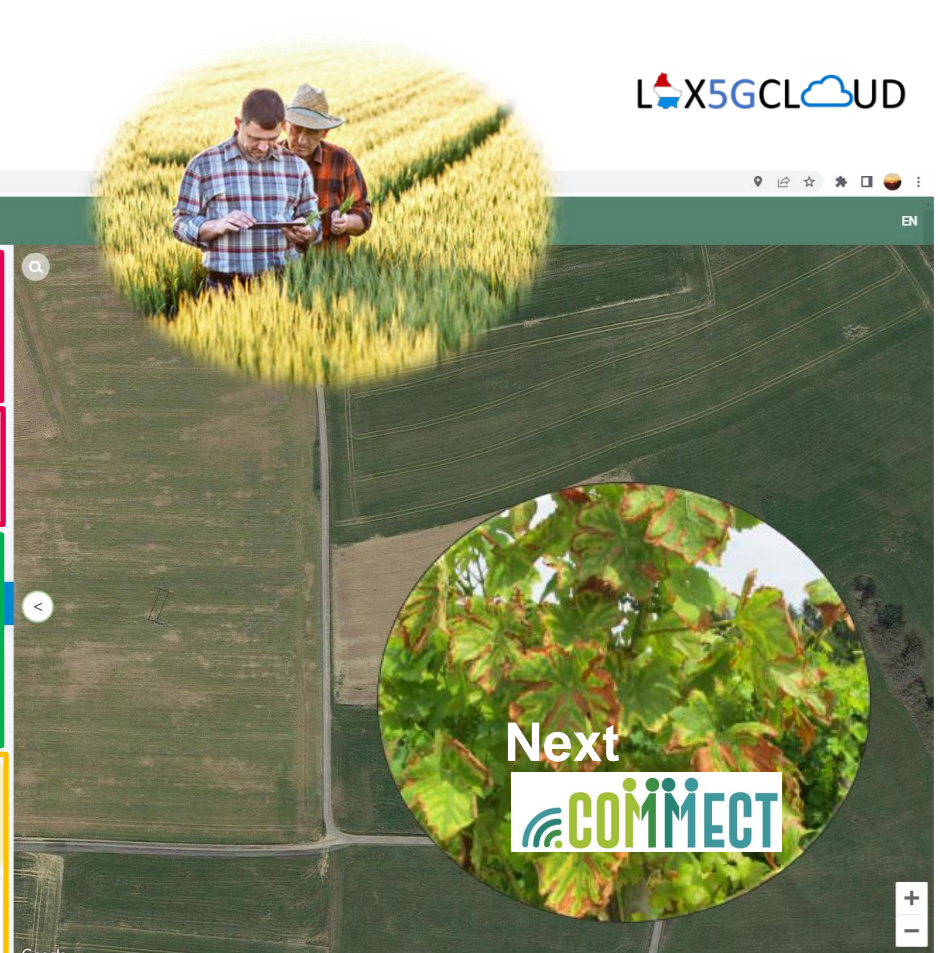
Seeding performed Waldbillig STARTED

Feb 21 08:48 **Wheat Alhambra, Waldbillig**

ACTIVITIES

Ploughing done on Waldbillig NEW

Nov 21 08:48 **Wheat Alhambra, Waldbillig**



Next

COMiNECT

DIGITAL FARMING SOLUTIONS

Continuous Monitoring



Weed Detection and Control



DIGITAL FARMING SOLUTIONS

Many More...
What's next?



LX5GCLUD

Workshops

Training

Development

COMMECT

Bridging the digital divide and addressing the need of Rural Communities with Cost-effective and Environmental-Friendly Connectivity Solutions

**Tell us your needs
We will design the best
connectivity solution
and digital application for you !**



Lux5GCloud

Exploiting the potential of 5G, IoT, EO, cloud and ML for sustainable digital farming solutions.



5G

Thank you !

Get in touch to know more!

Project PI and Coordinator

Maria Rita PALATTELLA

mariarita.palattella@list.lu

<https://www.list.lu/en/environment/project/lux5gcloud/>

